



**Kentucky
Speech-Language-Hearing
Association**

**2012 Convention on
Communication Disorders**



**Hitting A Home Run For
Communication Disorders**

**February 15-18, 2012
Kentucky International Convention Center
Louisville, KY**

**KSHA Office | 838 East High Street, Suite 263, Lexington, KY 40502 | 800-837-2446
FAX 888-729-3489 | Email: kshaoffice@ksha.info | Website www.ksha.info**

TABLE OF CONTENTS

2	Co-Directors Welcome Letter
2	Silent Auction
3	Hotel Information
3	Highlights for 2012
3	Convention Committee
4	Please Consider Volunteering
4	Student Opportunities
4	Handouts on the Web
4	Registration Notes
4	Cancellations and Refunds
5-8	2012 Highlighted Presenters
9-11	2012 Convention Lineup
12	New - Praxis World Series
12-15	Convention At-A-Glance
15	Exhibit Area Hours
15	Name Badges
15	Continuing Education
Insert	Convention Registration Form

Co-Directors Welcome Letter



The 2012 KSHA Convention on Communication Disorders is going to be here before we know it. We are again delighted to be the co-directors of our Annual Convention, and we really want you to join us in Louisville! The theme for this year's convention is **Hitting a Home Run for Communication Disorders** in honor of the Louisville Slugger bat museum and the Louisville baseball team, The Bats. As you read over the program, please take note of the fabulous presenters that are planned for this year's Convention. We think

you will be very pleased! Our adult program and pediatric program committees have worked hard to bring you top-notch, talented presenters who are knowledgeable in the current challenges that face speech-language pathologists and audiologists on a daily basis. As an added feature for our Convention this year, we have invited presenters from the University of Louisville to speak on resumé writing and interviewing skills that will provide necessary information for those beginning their careers in speech and audiology, as well as, for those who may be making a change in jobs and would like a refresher course in these skills. In addition, our keynote speaker, Mr. Jeff Alt, promises to be motivating and uplifting. He is a speech pathologist who has an incredible story to tell about his hike along the Appalachian Trail. His story will jump start our Convention and get us motivated on Thursday morning. We are also very excited to have our luncheon speaker, Ms. Debbie Dacey, who is also a fellow colleague, present her very interesting and motivating perspective regarding her stories and work in our field. With our line-up, we are certain that you will leave Louisville with new knowledge, enlightenment, clarification and very importantly, pleasurable memories of celebrating our profession with old and new friends.

So please, take a swing at attending our Annual Convention for 2012 in Louisville, Kentucky. Take this opportunity to look through this program mailer and see all the fun and excitement we have to offer. Register early and make your reservations! We look forward to seeing you there as we **Hit a Home Run for Communication Disorders!**

Christie LaCharite and Tina Brock
Co-Directors of the 2012 KSHA Convention



HIT A HOME RUN WHEN YOU JOIN KSHA on TWITTER TODAY!

KSHA wants to keep you up-to-date on Convention information with Twitter.

Sign up to follow us on [Twitter.com/KYSPEECH](https://twitter.com/KYSPEECH) and Join Us Today!

KSHA "tweets" will provide pre-Convention updates, as well as any onsite changes or reminders.

Tweet you soon!

2012 KSHA Silent Auction

This year, the Silent Auction will be held in the Exhibit Hall on Thursday, February 16. Please plan to stop by and place a bid on one of the many items offered by our Kentucky universities. Each university will be competing for the right to claim the first and second place KSHA cash awards for raising the most amount of money for their university. Please help them achieve their goal by placing a generous bid. Light nibbles and cash bar will be available from 5:00 – 6:30 pm. The items will be set up and available for your viewing throughout the day on Thursday. **Bids will be accepted until 6:00 pm.** Tables will all close at the same time.

Please contact Amanda Kasselmann at amanda.kasselmann@boone.kyschools.us if you have:

- Suggestions
- Items you wish to donate
- Want to volunteer to assist with Silent Auction!



Hotel Reservations – Book Now

Marriott Louisville Downtown
280 West Jefferson Street
Louisville, KY 40202
1-800-533-0127

Special Room Rates Ranging From of \$145—175 per night will be available until January 17, 2012, or until the room block is sold out, whichever occurs first.

The Hotel is connected via a skywalk to the Kentucky International Convention Center.



Highlights for 2012!

Wednesday – Warming Up!

- 3:30 pm Registration opens - Exhibit Hall, first floor, Kentucky International Convention Center
- 4:30 pm Sessions begin

Thursday – And Let the Fun Begin

- 7:00 am – 9:00 am Start your day by grabbing your breakfast and cup of coffee in the Exhibit Hall
- 7:00 am Registration opens - Exhibit Hall, first floor, Kentucky International Convention Center
- 8:00 am Keynote speaker, Jeff Alt, will kick off our day by sharing with us his adventures while hiking the Appalachian Trail
- 12:00 pm **Audiologists** earn CEs while enjoying their complimentary lunch!
Pre-registration required
- 5:00 pm – 6:30 pm Time to have some fun! Join us in the Exhibit Hall for the **Welcome Reception, Silent Auction, Poster Sessions** and the **Praxis World Series!** Teams will compete for the right to claim the title of 2012 Champions. Come and cheer your favorite team on. Light hors d'oeuvres and cash bar will be offered.



Friday – Awards, Awards, Awards!

- 7:00 am – 9:00 am Start your day by grabbing your breakfast and cup of coffee in the Exhibit Hall
- 7:00 am Grab your breakfast and join us at the **KSHA Annual Membership Forum.**
- 11:30 am – 1:30 pm Enjoy the **Annual Awards Presentation, Luncheon, KSHA Annual Meeting** and **Luncheon Speaker**, Deborah Dacey.
Pre-registration is required.

Saturday – Winding Down

- 8:00 am Grab your breakfast, a cup of coffee and enjoy your final session selection! Breakfast will be located near the session rooms and registration area.

CONVENTION COMMITTEE

Co-Director
Tina Brock
christina.brock@boone.kyschools.us

Co-Director
Christie LaCharite
christie.lacharite@boone.kyschools.us

Pediatric Program
Patti Lammering
patricia.lammering@boone.kyschools.us

Amy Zerhusen
amy.zerhusen@boone.kyschools.us

Adult Program
Tracey Jozsa
tracey.jozsa@boone.kyschools.us

Audiology Program
KSHA Office
kshaoffice@ksha.info

Exhibits
KSHA Office
kshaoffice@ksha.info

Silent Auction
Amanda Kasselmann
majlk@insightbb.com

Volunteers
Terri Durkin
shamrock@insightbb.com

Susan Waters
susanwaters@fuse.net

Awards Luncheon
Ann Miller
foghorn78@fuse.net

Speaker Arrangements
Patty Relajo
prelajo@insightbb.com

Karen Anderson
karenandbob@insightbb.com

Donna Becher
becher@fuse.net



**Hitting A Home Run For
Communication Disorders**

Be An MVP – Please Consider Volunteering!



Not only will you be helping your organization, volunteering is fun and a great way to network. Volunteers are needed for the following areas

- Registration Desk – Especially at peak registration times
- Moderator – Consider being a moderator for a session you plan to attend. Scripts are provided

Contact Susan Waters: susanwaters@fuse.net
or Terri Durkin: shamrock@insightbb.com.

Student Opportunities

Poster Sessions

Graduate students have the opportunity to present current research projects at the Convention. This is an excellent opportunity to share current information with colleagues and to interact with prospective employers. Deadline to submit a poster is January 14, 2012.

Volunteer Opportunities

KSHA is offering volunteer slots to students attending the Convention. For volunteering a minimum of four hours, you will be entitled to a free Convention registration. Four opportunities are available at all of the Kentucky universities with programs in speech-language pathology, audiology or education of the hearing impaired. You must be a KSHA member to participate. Contact Susan Waters at susanwaters@fuse.net. Deadline to register is January 20, 2012.

Silent Auction

Help your university by donating, bidding or creating an item for our Silent Auction. All proceeds for the Silent Auction benefit our universities.

Networking With Future Employers

The KSHA Convention is a perfect location to network with Convention attendees and/or exhibitors and get a head start on employment opportunities.

Print Your Handouts!



To help ensure a healthy future for the environment we are continuing to provide the handouts electronically.

Handouts will be posted two weeks prior to the Convention from presenters who wish to take advantage of this opportunity. Visit the KSHA website, www.ksha.info, and choose to print your handouts or save them to your computer.

Handouts will not be available on-site.

Registration Notes

Registration Form located in this publication!

Early Registration Rate

To receive the special early registration rate, register by January 10, 2012. Your registration form and payment must be postmarked by January 10, 2012 to receive the special rate. You may also register online. Visit www.ksha.info.

Payment:

- Make checks and money orders payable to: **KSHA**.
- Credit card services are available. (*Visa, MasterCard and Discover only*).

Registrants must be a 2012 KSHA member to register at the member rate. If you are unsure of your membership status, please contact the KSHA Office at 800-837-2446 or kshaoffice@ksha.info to check your membership status. For your convenience, you may include your 2012 membership dues on your Convention Registration Form. Other state SLH Association members must send verification of membership to register at the member rate.

Student membership in NSSLHA is not considered KSHA membership.

Pre-registration is strongly encouraged as availability is not guaranteed with on-site registration.

Cancellations and Refunds

All cancellations and refunds will be processed after the Convention.

Full refunds (minus a \$25 handling fee) will be made only if written cancellation request is postmarked no later than January 25, 2012.

KSHA is accountable for the number of attendees guaranteed to the hotel at this time, therefore, we cannot grant a refund for cancellations received after January 25, 2012.

2012 Convention Highlighted Presenters



Carol Afflerbaugh, MA, CCC-SLP, is a speech-language pathologist and a board certified behavior analyst having extensive training in the Kaufman Speech Praxis Method and the Kasper & Kaufman Sign to Talk protocols, both to assist children in becoming functional, vocal and intelligible communicators. Carol established two applied behavior analysis (ABA) intervention programs at the Kaufman Children's Center, which use the teaching procedures associated with applied verbal behavior (AVB): Training is the center-based program and HomeRun is the home-based program. Carol has achieved instructor certification with the LINKS to Language intervention program, is a certified Hanen Speech-Language Pathologist, has been trained in the Picture Exchange Communication System (PECS) and has achieved consultant level for Affect-Based Language Curriculum. Carol received her BA in Sociology and her MA in Speech and Hearing from the University of California and an Educational Specialist Certificate from Wayne State University. She has served on the Board of the Autism Society of Michigan and was the recipient of the Autism Society of Michigan's Stephen Tsai Educator of the Year Award in 2005.

Ms. Afflerbaugh will be presenting ***Teaching Functional Communication to Young Children With Autism or Other Language and Learning Challenges***, on Thursday.



Jeffrey Alt, MS, CCC-SLP, is an accomplished adventurer, acclaimed speaker, award-winning author of *A Walk for Sunshine* and a speech-language pathologist. He holds a master's degree in speech-language pathology from Ohio's Miami University.

Jeff walked the entire 2,160-mile Appalachian Trail to raise money for Sunshine, a home for the disabled, where his brother resides. His journey inspired an annual event that has raised more than \$250,000. Jeff's story has been featured by ESPN's Inside America's National Parks, Hallmark Channel's New Morning, CNN-radio, the *ASHA Leader*, The Associated Press, USA Radio Network, New Dimensions-National Public Radio and many more. He lives with his wife and two children in Cincinnati, Ohio.

Mr. Alt is our Keynote Speaker and will present ***Lessons from the Appalachian Trail*** on Thursday.



Lynzee Alworth, PhD, joined the faculty at the University of Louisville in October of 2010 and is a recent graduate of the University of Tennessee where she obtained her degree in Speech and Hearing Science with a concentration in audiology.

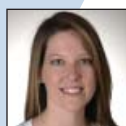
While completing her degree, she also completed an Alexander Graham Bell Cochlear Implant Fellowship in 2010; one of nine nationwide. Dr. Alworth currently divides her time at the University of Louisville between clinical practice, teaching and research. She is responsible for teaching Cochlear Implants, Pediatric Audiology, Pathologies, Medical Audiology and Clinical Report Writing.

Dr. Alworth will be presenting ***Cochlear Implants ... When to Vote Yes vs When to Vote No??*** and ***Infant Hearing Screenings: What Most Mother's Don't Know*** on Friday.



Raquel Anderson, PhD, is an associate professor in the Department of Speech and Hearing Sciences at Indiana University, Bloomington Campus. She teaches and conducts research in the areas of child language disorders, with a special on child second language acquisition. In particular, she studies children with language learning deficits who are Spanish-speaking and in an English language immersion context. Her research aims at describing how different language learners are impacted by sociolinguistic environment. Because of the difficulty in identifying language disability in second language learners, her research focuses on identifying potential clinical markers of language learning deficits in second language learners. She has published extensively in the area of child language and second language acquisition in children with and without language impairment.

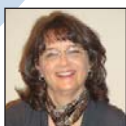
Dr. Anderson will be presenting ***But I Don't Speak Their Language: Working With Linguistically Diverse Children***, on Friday.



Anne Blandford, MS, CCC-SLP, is a speech-language pathologist at the Norton Neurosciences and Spine Rehabilitation Center in Louisville, Kentucky. Her primary treatment focus is adult neurological disorders including Multiple Sclerosis,

Parkinson's Disease, CVA and Brain Injury. She currently serves as a consulting therapist at the Norton Neuroscience Institute Brain Tumor Clinic completing neurocognitive screenings, making recommendations for therapy and providing patient education. Anne has served as a clinical instructor for graduate students at the University of Louisville, supervising clinical rotations in acute care while working at Norton Hospital. She earned her Bachelor of Health Science degree at the University of Kentucky, majoring in Communication Disorders. Anne later received her Master of Science degree in speech-language pathology at the University of Louisville.

Ms. Blandford will be presenting ***Cognitive Deficits and Approaches to Treatment in Multiple Sclerosis and Multidisciplinary Care of the Brain Tumor Patient and the Role of the SLP*** on Wednesday.



Deborah Dacey, MA, CCC-SLP, ATP, has more than 35 years of experience working with children and adults with severe communication disorders. She has worked in a variety of clinical and educational settings both as a clinician and a supervisor.

Deborah is currently a Special Education Coordinator with Boone County Schools. She has presented at local, state and national conferences including Closing the Gap, the Assistive Technology Industry Association Conference, the Ohio Speech-Language-Hearing Association, SECEC and the Kentucky Early Intervention Services Conference. Her presentations have addressed a variety of topics with emphasis on augmentative communication and therapeutic intervention strategies with children and adults with severe communications disorders. She has served as an Adjunct Instructor at the University of Cincinnati and the University of Louisville where she has guest lectured and taught graduate classes. Ms. Dacey also holds her Assistive Technology Practitioner credential from RESNA.

Ms. Dacey will be presenting ***Using the iPad as a Communication Device*** on Wednesday and ***Communicating With Families*** on Friday as the Annual Awards Luncheon speaker.

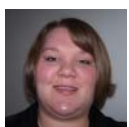
2012 Convention Highlighted Presenters



Brooke Freeman Dinsmore, AuD, FAAA, completed her undergraduate studies in 2006 at Eastern Kentucky University, earning a bachelor's degree in Deaf Education. She earned her Doctor of Audiology (AuD) from the University of Louisville in

2011. She completed her fellowship in private practice in Louisville, Kentucky, specializing in dizziness and balance assessment and treatment, as well as tinnitus evaluation and management. She is licensed by the state of Kentucky as both an audiologist and hearing instrument specialist. Dr. Dinsmore has also started working toward a Master's degree in Business Administration (MBA) with a concentration in health care management. Dr. Dinsmore is a fellow of the American Academy of Audiology. Other professional memberships include the Kentucky Academy of Audiology, the Academy of Doctors of Audiology and the American Speech-Language-Hearing Association. She is currently in the process of obtaining the Certificate of Clinical Competency in Audiology from ASHA.

Dr. Dinsmore will be presenting ***Understanding, Evaluating and Managing Tinnitus*** on Thursday.



Katherine Fitzharris, AuD, CCC-A, FAAA, graduated with her AuD from the University of Louisville in 2009. She is currently a PhD student at the University of Texas at Dallas under the mentorship of Dr. Jeffrey Martin. Katherine is a teaching assistant

and a research assistant in the Cortical Functions Laboratory at the Callier Center for Communication Disorders. She recently completed the first VA Advanced Clinical Research Fellowship in Polytrauma/ Traumatic Brain Injury at the VA Boston Healthcare System. Dr. Fitzharris is also the 2010 recipient of the AAA Student Research Forum Award as well as the 2009 University of Louisville Program in Audiology Student Research Award. Her research interests include auditory processing, event-related potentials, and auditory cognitive neuroscience.

Dr. Fitzharris will be presenting ***Dual Sensory Impairment in Older Adults*** and ***Dual Sensory Impairment in Special Populations*** on Thursday.



Cheri Fraker, CCC-SLP and **Laura Walbert, CCC-SLP**, are ASHA certified pediatric speech pathologists and certified lactation consultants.

They provide therapy services at The Center for Neuromuscular Services and they are the clinic feeding specialists at The Center for Selective Eating and Pediatric Feeding Disorders, a multi-disciplinary feeding team clinic at Koke Mill Medical Center. Cheri and Laura specialize in evaluation and treatment of infants and children with feeding disorders and

dysphagia. Cheri developed the techniques of Pre-Chaining and Food Chaining® to treat children who are high risk for developing or who have been diagnosed with feeding disorders, problem and picky eating. They have presented on pediatric feeding disorders at the 2004 World Gastroenterology, Hepatology and Nutrition Conference, The National Gastroenterology, Hepatology and Nutrition Conference, the 58th and 59th American Academy of Cerebral Palsy and Developmental Medicine and The UCLA/UMH

Nutrition Leadership Conference. Cheri and Laura co-authored articles in Nutrition in Clinical Practice and international medical periodicals, The Nest, Nutrition and the MD. Articles about Food Chaining have appeared in *The Wall Street Journal*, *The Chicago Tribune* and *Fox News Live Morning Show* in Chicago. Cheri and Laura are co-authors of the books *Evaluation and Treatment of Pediatric Feeding Disorders: From NICU to Childhood* and *Food Chaining: The Sensible Six Step Solution for Picky and Problem Eaters*.

Ms. Fraker and Ms. Walbert will present ***Pediatric Feeding Disorders: PreChaining and Food Chaining Therapy Programs***, on Friday.



Lisa Gershkoff-Stowe, PhD, is an associate professor in the Speech and Hearing Sciences Department and Cognitive Science Program at Indiana University, Bloomington, where she directs the Baby Language Lab. The focus of her research is children's language learning. Studies carried out in her laboratory are designed to explore the changing relation between language comprehension and production and, in particular, why there are gaps between what children understand and say. Currently, her research is funded by a grant from the National Science Foundation.

Dr. Gershkoff-Stowe will present ***Infant-Toddler Communication Development and Disorders*** on Friday.



Rebecca Gould, MA, is the Director/Owner of MedSpeech, Inc., Medical Speech-Language Pathologists of the Palm Beaches. Her expertise and certifications include swallowing and swallowing disorders, laryngectomy, certified instructor of alaryngeal speech; treatment of airway disorders; evaluation of voice, swallowing and neurogenic disorders with instrumental diagnosis/competency in videostroboscopy, videofluoroscopic swallowing study (VFSS), fiberoptic endoscopic evaluation of swallowing (FEES) and bio-feedback techniques. She is an adjunct professor for voice at FAU. Rebecca also directs the Voice and Swallow Center, Inc.

Ms. Gould will be presenting ***The Use of FEES as a Tool for Clinical Decision Making in the Evaluation and Management of Dysphagia*** and ***Voice Evaluation and Treatment*** on Friday.



Amanda Potter Hereford, CCC-SLP, received her Master's degree in Communication Sciences from the University of Connecticut. Currently, she is a speech-language pathologist at Vanderbilt University Medical Center working in the acute setting primarily with patients that have suffered traumatic brain injuries. Amanda has been the guest presenter for graduate courses, community and state level conferences. She is currently participating in research focusing on improving functional outcomes for patients with traumatic brain injury.

Ms. Hereford will present ***Multi-Modality Approach to Rehabilitation of Patients With Traumatic Brain Injury*** on Friday.

2012 Convention Highlighted Presenters



Larry Humes, PhD, is currently Distinguished Professor, Department of Speech and Hearing Sciences, at the Indiana University. He received his Master's degree in clinical audiology from Central Michigan University and his PhD in audiology and

hearing science from Northwestern University. He has been at Indiana University since 1986 and prior to that was on the faculty at Vanderbilt University for eight years. He has served on the editorial board for several journals. He has received the Honors of the Association and the Alfred Kawana Council of Editors' Award from the American Speech-Language-Hearing Association and the Jerger Research Career Award and Presidential Award from the American Academy of Audiology. His most recent research activities have been focused on age-related changes in auditory perception, including speech-recognition ability and on outcome measures for hearing aids.

Dr. Humes will present ***Factors Contributing to Speech Understanding Problems of Older Adults*** on Wednesday.



Mark Kander, MA, is the Director of Health Care Regulatory Analysis on the Health Care Economics and Advocacy team of the American Speech-Language-Hearing Association (ASHA). He is ASHA's liaison to Medicare payer organizations

and provides guidance to members in all aspects of third-party payment and coverage. Mark is also staff coordinator of ASHA's State Medicare Administrative Contractor Network (SMAC). He co-authored the *ASHA Medicare Handbook for Speech-Language Pathologists* as well as its parallel handbook for audiologists (currently being converted to online subscription). Prior to joining ASHA, Mark was vice-president of National Health Publishing (Owings Mills, Maryland). Mark holds an MA degree in health services administration from the George Washington University and a BS in business administration from the Ohio State University.

Mr. Kander will be presenting ***Medicare in Audiology and Speech-Language Pathology, Including Bundled Payments*** on Wednesday and Thursday.



Jane Kitson, BS, is a national early childhood educational consultant and published author. She is the author of more than 350 original songs and finger plays that have been shared with early childhood professionals. She has been the classroom teacher of children ages 2-7 and an onsite consultant for 27

years. In addition to speaking at various venues each year, she works with children in the school settings, allowing her to fine tune her presentations with information and experiences that she and the children enjoy.

Ms. Kitson will be presenting ***Giggle Wiggle Clap and Learn - Move Your Body and Your Brain*** on Thursday and ***Fishing for New Ideas That Really Work Right Away and Add a Slice of Music - Add a Slice of Fun!*** on Friday.



Robert Marshall, PhD, was the Chief of Audiology and Speech-Language Pathology at the Portland, Oregon, VA Medical Center for 26 years. Currently he is a Professor in the Department of Rehabilitation Sciences at the University of Kentucky. Dr. Marshall

is a Fellow of ASHA, recipient of the Honors of the Academy of Neurological Communication Disorders and Sciences, and has been the North American Editor for the journal *Aphasiology* for 25 years. He has published more than 200 articles, chapters and books on aphasia and related disorders and distinguished himself as clinician, teacher, mentor and researcher in a career approaching 50 years.

Dr. Marshall will present ***Management of the Fluent Aphasias: A Context-Based Approach*** on Saturday.



Leslie Peters, BA, has more than 20 years experience as an author/producer of multi-media educational programs, including the four-part Vision and Learning CE credit series for educators, nurses and occupational therapists. Her training programs

have been used in more than 800 schools and government agencies and garnered more than 60 awards, including three Emmy awards and 30 Telly awards. Ms. Peters has presented at national and regional conferences. She has trained and assisted educators and therapists in the assessment of thousands of students, adults and inmates.

Ms. Peters will be presenting ***Visual Processing Dominates Learning: The Importance of Sensory Integration and Sensory Integration Techniques for Adult Literacy*** on Thursday



Nandhu Radhakrishnan, PhD, CCC-SLP, graduated with a BS and MS in audiology and speech rehabilitation from University of Mumbai, India. Dr. Radhakrishnan pursued his doctoral studies at Bowling Green State University under Dr.

Ronald Scherer. After receiving a PhD for his work titled *Acoustic, Aerodynamic and Kinematic Analysis of Taan Gestures in Indian Classical Singing*, Dr. Radhakrishnan worked as a clinical fellow at the University of Pittsburgh Voice Center, under the guidance of Dr. Jackie Gartner-Schmidt (SLP) and Dr. Clark Rosen (ENT). For the past five years, Dr. Radhakrishnan has been teaching and researching speech and voice science including professional, performance and clinical voice at the University of Missouri.

Dr. Radhakrishnan will present ***Voice Therapy Made Easy!*** on Thursday.

2012 Convention Highlighted Presenters



Erin Redle, PhD, CCC-SLP, is a speech language pathologist at Cincinnati Children's Hospital Medical Center in the Division of Speech Pathology and the Communication Sciences Research Center, as well as adjunct Assistant Professor at the University of

Cincinnati. She is currently a Quality Scholar through the James M. Anderson Center for Health Systems Excellence. Her primary research and clinical interests are childhood apraxia of speech and improving the quality of intervention for children with speech sound disorders. Her previous work focused on the impact of feeding and swallowing disorders on families.

Dr. Redle will be presenting ***Pediatric Feeding and Swallowing: Treating the Child and Supporting the Family and Intervention for Childhood Apraxia of Speech*** on Thursday.



Nancy Shadowens, MS, CCC-SLP, is an expert in the field of dementia management. She is a practicing speech-language pathologist who gained her expertise working with patients with dementia and their caregivers over the past 10 years. Currently,

she is the Rehab Director for Select Rehabilitation Hospital where she developed a successful dementia program for patients and caregivers. Nancy is co-owner of Consultants in Dementia Therapy, a company founded as a resource for therapists, nurses and caregivers and as a consulting company for facilities. She is co-writer of two books, one for therapists, *Dementia Therapy and Program Development*, and one for caregivers, *Dementia: Loving Care with a Therapeutic Benefit*. Nancy has been speaking across the US on the topic of dementia management, has been an invited speaker internationally. She received her undergraduate degree from Texas Christian University and her master's degree from Texas Woman's University.

Ms. Shadowens will be presenting ***Dementia Outside the Box***, on Friday.

Sandra Tattershall, PhD, CCC-SLP, has been practicing her particular brand of speech language pathology through many, many, years in a variety of settings including a Children's Hospital School for Aphasic Children in Washington, D.C., Louisville Deaf Oral Preschool, Fairfax County (VA) Public Schools, Cincinnati Speech & Hearing Center, Cincinnati Children's Hospital Center for Developmental Disorders and private practice. She continues to be fascinated by her clients from whom she learns from daily!

Dr. Tattershall will be presenting ***Helping Adolescents: Processing Information - Not Just Reading: Understanding - Not Just Memorizing*** on Thursday and a second PEDS SLP session on Friday.



Jeffrey Weihing, PhD, from the University of Louisville, received his PhD from the University of Connecticut where his studies focused on central presbycusis and neuroaudiology in pediatrics and adults. His current recent research addresses development of clinical measures of binaural

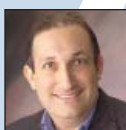
hearing for the purposes of better understanding hearing in noise difficulties.

Dr. Weihing will be presenting ***Auditory Processing Disorders in Children - Screening & Diagnosis and Using Electrophysiology in Adult Hearing Aid Fittings - Current Progress*** on Friday



Julie Wring, MA, CCC-SLP, has more than 18 years experience as a speech-language pathologist in many settings including hospitals, skilled nursing facilities, schools, home health and early intervention. Currently, she is the champion of the stroke team at the inpatient rehabilitation hospital in which she has been employed as the Senior SLP for six years. Julie is guiding the stroke program toward The Joint Commission Disease-Specific Certification. She lives in Northern Kentucky with her husband who is a nurse practitioner and her nine-year-old daughter. She enjoys reading, gardening and painting.

Ms. Wring will be presenting ***Research and Rationale for the Use of Interactive Metronome in Speech-Language and Cognitive-Linguistic Treatment and Enhancing Speech Therapy Outcomes With IM*** on Friday.



Scott Yaruss, PhD, CCC-SLP, BRS-FD, ASHA Fellow, is Associate Professor and Director of the Master's Degree Program in Speech-Language Pathology at the University of Pittsburgh and Co-Director of the Stuttering Center of Western

Pennsylvania. In addition to conducting research on the development of stuttering in young children, Dr. Yaruss has extensive experience working with children and adults who stutter in a wide variety of clinical settings. He has served on the board of directors of the National Stuttering Association and on the Steering Committee of the American Speech-Language-Hearing Association's Special Interest Division for Fluency Disorders. Dr. Yaruss frequently presents continuing education workshops to help speech-language pathologists feel more confident in their ability to help preschool and school-age children who stutter. He is co-author of the Overall Assessment of the Speaker's Assessment of Stuttering (OASES), published by Pearson Assessments, as well as more than 130 papers, articles, chapters or booklets on stuttering.

Dr. Yaruss will present ***Practical Counseling Strategies for Speech-Language Pathologists***, on Thursday.

2012 Convention Lineup



Abstracts and learner outcomes for all sessions can be found on the KSHA website, www.ksha.info.

Wednesday, February 15

Events of the Day

3:30 pm - 8:30 pmConvention Registration, Exhibit Hall
4:30 pm - 8:15 pm Sessions

Wednesday's Sessions

4:30 pm - 6:00 pm

Session 1 – PEDS SLP

AAC and Pediatricians - What you Need to Know
Karen Coulter, PhD

Session 2 – ADULT SLP

Cognitive Deficits and Approaches to Treatment in Multiple Sclerosis
Anne Blandford, MS, CCC-SLP

Session 3 – PEDS SLP

Why Wait? Referring for Early Intervention
Judith Axelrod; David Causey, PhD; Ashley Redenbaugh, MS, CCC-SLP;
Sherri Stover, MS

4:30 pm - 6:30 pm

Session 4 – AUDIOLOGY

Factors Contributing to Speech Understanding Problems of Older Adults
Larry Humes, PhD

4:30 pm - 8:00 pm

Session 5 – PEDS SLP

Management of Voice Disorders in the School Based Setting
Rebecca Hancock, CCC-SLP

6:30 pm - 8:00 pm

Session 6 – MULTI-INTEREST

AAC Panel - Who, What, Where, When and How
Karen Coulter, PhD; Allison Amshoff, MS; Pat Pierce, MS

Session 7 – ADULT SLP

Multidisciplinary Care of the Brain Tumor Patient and the Role of the SLP
Anne Blandford, MS, CCC-SLP

Session 8 – MULTI-INTEREST

Using the iPad as a Communication Device
Tina Melville, MEd; Jodi South, MA; Deborah Dacey, MA, CCC-SLP, ATP

6:45 pm - 8:15 pm

Session 9 – MULTI-INTEREST

Medicare in Audiology and Speech-Language Pathology, Including Bundled Payments
Mark Kander, MA

This session will be repeated Thursday at 9:15 am.

Thursday, February 16

Events of the Day

7:00 am - 6:30 pm Convention Registration - Exhibit Hall
7:00 am - 9:00 am Breakfast in the Exhibit Hall
7:00 am - 6:30 pm Exhibits Open
8:00 am - 9:00 am Keynote Address
12:00 pm - 1:00 pm Audiology Luncheon
5:00 pm - 6:30 pm Welcome Reception - Exhibit Hall
5:00 pm - 6:30 pm Silent Auction - Exhibit Hall
5:15 pm - 6:15 pm PRAXIS World Series
5:15 pm - 6:15 pm Poster Sessions - Exhibit Hall

Thursday's Sessions

8:00 am - 9:00 am

Session 10 – PROFESSIONAL ISSUES

Lessons From the Appalachian Trail
Jeffrey Alt, MS, CCC-SLP

9:15 am - 10:45 am

Session 11 – PEDS SLP

Middle-High School Speech Pathologists Round Table Discussion: Efficacy of Present System of Service Delivery
Brenda Scott, MA

Session 12 – ADULT SLP

Post-Extubation Dysphagia: Considerations for Implementation of a Nursing Dysphagia Screen
Stefanie Moynahan, MS

Session 13 – MULTI-INTEREST

Medicare in Audiology and Speech-Language Pathology, Including Bundled Payments
Mark Kander, MA

This session is a repeat of the Wednesday 6:45 pm session.

9:15 am - 12:30 pm

Session 14 – PEDS SLP

Helping Adolescents: Processing Information – Not Just Reading: Understanding – Not Just Memorizing
Sandra Tattershall, PhD, CCC-SLP

Session 15 – PEDS SLP

Pediatric Feeding and Swallowing: Treating the Child and Supporting the Family
Erin Redle, PhD, CCC-SLP

Session 16 – MULTI-INTEREST

Practical Counseling Strategies for Speech-Language Pathologists, Part 1
Scott Yaruss, PhD, CCC-SLP, BRS-FD, ASHA Fellow

Session 17 – PEDS SLP

Teaching Functional Communication to Young Children With Autism or Other Language and Learning Challenges, Part 1
Carol Afflerbaugh, MA, CCC-SLP

Session 18 – ADULT SLP

Visual Processing Dominates Learning: The Importance of Sensory Integration
Leslie Peters, BA

9:30 am - 11:45 am

Session 19 – AUDIOLOGY

Understanding, Evaluating and Managing Tinnitus
Brooke Freeman Dinsmore, AuD, FAAA

2011 Convention Lineup

Thursday, February 16 *(continued)*

11:00 am - 12:30 pm

Session 20 – PROFESSIONAL ISSUES

Career Networking - Resume Writing and Interviewing Skills
Rebecca Clark
Not offered for CE credit.

Session 21 – PEDS SLP

Strategic Interventions for Auditory Memory Training
Rynette Kjesbo, MS

12:00 pm - 1:00 pm

AUDIOLOGY LUNCHEON

2012 Sponsor: Cochlear Americas

1:30 pm - 3:00 pm

Session 22 – PROFESSIONAL ISSUES

Career Networking
Rebecca Clark
Not offered for CE credit.

Session 23 – AUDIOLOGY

Dual Sensory Impairment in Older Adults
Katherine Fitzharris, AuD

Session 24 – PROFESSIONAL ISSUES

Navigating Professional Associations and Regulatory Boards: The Basics of Licensure, Certification and Membership
Kellie Ellis, MA, CCC-SLP; Anne Olsen, PhD, CCC-AUD; Linda Gregory, MA, CCC-SLP

1:30 pm - 5:00 pm

Session 25 – PEDS SLP

Giggle Wiggle Clap and Learn - Move Your Body and Your Brain
Jane Kitson, BS

Session 26 – PEDS SLP

Intervention for Childhood Apraxia of Speech
Erin Redle, PhD, CCC-SLP

Session 27 – ADULT SLP

Sensory Integration Techniques for Adult Literacy
Leslie Peters, BA

Session 28 – MULTI-INTEREST

Practical Counseling Strategies for Speech-Language Pathologists, Part 2
Scott Yaruss, PhD, CCC-SLP, BRS-FD, ASHA Fellow

Session 29 – PEDS SLP

Teaching Functional Communication to Young Children With Autism or Other Language and Learning Challenges, Part 2
Carol Afflerbaugh, MA, CCC-SLP

Session 30 – ADULT SLP

Voice Therapy Made Easy!
Nandhu Radhakrishnan, PhD, CCC-SLP

3:30 pm - 5:00 pm

Session 31 – AUDIOLOGY

Dual Sensory Impairment in Special Populations
Katharine Fitzharris, AuD

Session 32 – PROFESSIONAL ISSUES

The Road to Growing a Clinician: A Literary Connection
Pearl A. Payne, PhD

5:15 pm - 6:15 pm

POSTER SESSIONS

A Tea Party: For the Picky Eater

Leisa Hutchison, MS; Caroline Hudson, MS; Mary Lloyd Moore, MS

Association Between Objectively-Measured Physical Activity and Tinnitus, NHANES 2003-2004

Paul Loprinzi, PhD; Ben Gilham, AuD; Bradley Cardinal, PhD

Health Literacy: A Call to Action

Lauren Bland, PhD

Perceived Confidence and Knowledge of Autism: A Comparison of Paraprofessionals to Parents of Children With Autism

Laura Baker, BS; Charlotte Hubbard, PhD; Sue Mahanna-Boden, PhD

Using Imagery to Improve Reading, Writing and Oral Expression

Donna Shirley, MS

Friday, February 17

Events of the Day

7:00 am - 9:00 am Breakfast in the Exhibit Hall
7:00 am - 8:00 am Annual KSHA Member Forum
7:00 am - 6:15 pm Convention Registration
11:30 am - 12:30 pm Awards Luncheon, Annual Meeting and Awards
12:30 pm - 1:30 pm Annual Luncheon Speaker

Friday's Sessions

7:00 am - 8:00 am

Session 33 – PROFESSIONAL ISSUES

Annual KSHA Membership Forum

This meeting provides you with an excellent opportunity to address your concerns on issues that affect your profession and state association.

8:00 am - 9:30 am

Session 34 – AUDIOLOGY

Auditory Processing Disorders in Children - Screening & Diagnosis
Jeffrey Weihing, PhD

Session 35 – PEDS SLP

Fishing for New Ideas That Really Work Right Away
Jane Kitson, BS

Session 36 – ADULT SLP

Learning to Live With Aphasia
Vicki Simmons; Tamara Cranfill, PhD

Session 37 – ADULT SLP

Research and Rationale for the Use of Interactive Metronome in Speech-Language and Cognitive-Linguistic Treatment
Julie Wring, MA, CCC-SLP

Session 38 – MULTI-INTEREST

Stuttering Treatment Approaches for Children, Adolescents and Adults
Charles Hughes, MS

2012 Convention Lineup

Friday, February 17 (continued)

8:00 am - 11:30 am

Session 39 – ADULT SLP

Dementia Outside the Box, Part 1
Nancy Shadowens, MS, CCC-SLP

Session 40 – PEDS SLP

Pediatric Feeding Disorders: PreChaining and Food Chaining Therapy Programs, Part 1
Cheri Fraker, CCC-SLP; Laura Walbert, CCC-SLP

Session 41 – ADULT SLP

The Use of FEES as a Tool for Clinical Decision Making in the Evaluation and Management of Dysphagia
Rebecca Gould, MA

Session 42 – PEDS SLP

TBA
Sandra Tattershall, PhD, CCC-SLP

9:30 am - 11:30 am

Session 43 – PEDS SLP

But I Don't Speak Their Language: Working With Linguistically Diverse Children, Part 1
Raquel Anderson, PhD

10:00 am - 11:30 am

Session 44 – PEDS SLP

Add a Slice of Music - Add a Slice of Fun!
Jane Kitson, BS

Session 45 – ADULT SLP

Enhancing Speech Therapy With IM
Julie Wring, MA, CCC-SLP

Session 46 – PEDS SLP

Spiders to Strawberries: Creating Communicative Environments for Young Children With Down Syndrome
Kelly A. Kleinhans, PhD, CCC-SLP; Sharon B. Hart, PhD, CCC-SLP

Session 47 – PROFESSIONAL ISSUES

Spirituality and Health: Do SLPs Play a Role?
Sue Mahanna-Boden, CCC-SLP; Tamara Cranfill, PhD

Session 48 – AUDIOLOGY

Using Electrophysiology in Adult Hearing Aid Fittings - Current Progress
Jeffrey Weihing, PhD

1:45 pm - 3:15 pm

Session 49 – PROFESSIONAL ISSUES

What am I Missing?: Using Critical Thinking Skills to Recalibrate Clinical Decision Making
Sue Mahanna-Boden, PhD; Kellie Ellis, MS

Session 50 – AUDIOLOGY

Cochlear Implants ... When to Vote Yes vs. When to Vote No
Lynzee Alworth, PhD

Session 51 – PEDS SLP

Early Intervention: Oral Placement Therapy for Children With Down Syndrome
Monica Purdy, MA

1:45 pm - 5:00 pm

Session 52 – ADULT SLP

Dementia Outside the Box, Part 2
Nancy Shadowens, MS, CCC-SLP

Session 53 – ADULT SLP

Multi-Modality Approach to Rehabilitation of Patients With Traumatic Brain Injury
Amanda Potter Hereford, CCC-SLP

Session 54 – PEDS SLP

Pediatric Feeding Disorders: PreChaining and Food Chaining Therapy Programs, Part 2
Cheri Fraker, CCC-SLP; Laura Walbert, CCC-SLP

Session 55 – ADULT SLP

Voice Evaluation and Treatment
Rebecca Gould, MA

2:00 pm - 4:15 pm

Session 56 – PEDS SLP

But I Don't Speak Their Language: Working With Linguistically Diverse Children, Part 2
Raquel Anderson, PhD

Session 57 – PEDS SLP

Infant-Toddler Communication Development and Disorders
Lisa Gershkoff-Stowe, PhD

3:30 pm - 4:30 pm

Session 58 – AUDIOLOGY

Infant Hearing Screenings: What Most Mothers Don't Know
Lynzee Alworth, PhD; Lindsey Walker, BA; Whitney Kubach, BA

Saturday, February 18

Events of the Day

8:00 am - 12:30 pmConvention Registration
8:00 am.....Breakfast

8:30 am - 10:00 am

Session 59 – PEDS SLP

FoldAbility
Patty Relojo, MA, CCC-SLP; Christina Brock, MA, Ed, CCC-SLP

8:30 am - 12:00 pm

Session 60 – ADULT SLP

Management of the Fluent Aphasias: A Context-Based Approach
Robert Marshall, PhD

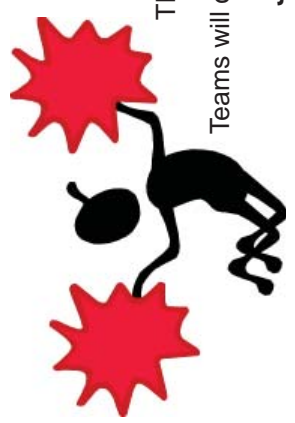
10:15 am - 11:45 am

Session 61 – PEDS SLP

TBA

CONVENTION At-A-Glance – Wednesday

		PM 4:30	4:45	5:00	5:15	5:45	6:00	6:15	6:45	7:00	8:00	
Wednesday/ February 15, 2012	AUDIOLOGY	<p>Session 4 <i>Factors Contributing to Speech Understanding Problems of Older Adults</i> (Humes) 4:30 pm - 6:30 pm</p>										
	MULTI-INTEREST	<p>Session 9 <i>Medicare in Audiology and Speech-Language Pathology, Including Bundled Payments</i> (Kander) 6:45 pm - 8:15 pm</p> <p>Session 8 <i>Using the iPad as a Communication Device</i> (Melville, South, Dacey) 6:30 pm - 8:00 pm</p> <p>Session 6 <i>AAC Panel - Who, What, Where, When and How</i> (Coulter, Amshoff, Pierce) 6:30 pm - 8:00 pm</p>										
PEDI SLP	AUDIOLOGY	<p>Session 1 <i>AAC and Pediatricians - What you Need to Know</i> (Coulter) 4:30 pm - 6:00 pm</p> <p>Session 3 <i>Why Wait? Referring for Early Intervention</i> (Axelrod, Causey, Redenbaugh, Stover) 4:30 pm - 6:00 pm</p> <p>Session 5 <i>Management of Voice Disorders in the School Based Setting</i> (Hancock) 4:30 pm - 8:00 pm</p>										
	ADULT SLP	<p>Session 2 <i>Cognitive Deficits and Approaches to Treatment in Multiple Sclerosis</i> (Blandford) 4:30 pm - 6:00 pm</p> <p>Session 7 <i>Multidisciplinary Care of the Brain Tumor Patient and the Role of the SLP</i> (Blandford) 6:30 pm - 8:00 pm</p>										



New This Year!

Praxis World Series!
Thursday, February 16, 5:15 pm – Exhibit Hall

This year KSHA is hosting a **Praxis World Series**.
Teams will compete for the right to claim the title of **2012 Champions!**

Join us in the Exhibit Hall and help rally your favorite university team to their victory!

CONVENTION AT-A-GLANCE – Thursday

		9:15	10:00	11:00	PM 12:00	1:00	2:00	3:00	4:00	5:00
Thursday, February 16, 2012	AM 8:00									
AUDIOLOGY	<p>Session 10 Keynote Address – Lessons From the Appalachian Trail (Alt) 8:00 am-9:00 am</p>	<p>Session 19 Understanding, Evaluating and Managing Tinnitus (Dinsmore) 9:30 am - 11:45 am</p>	<p>Session 19 Understanding, Evaluating and Managing Tinnitus (Dinsmore) 9:30 am - 11:45 am</p>		<p>Audiology Luncheon 12:00 pm - 1:00 pm</p>	<p>Session 23 Dual Sensory Impairment in Older Adults (Fitzharris) 1:30 pm - 3:00 pm</p>	<p>Session 31 Dual Sensory Impairment in Special Populations (Fitzharris) 3:30 pm - 5:00 pm</p>			
PEDS SLP		<p>Session 15 Pediatric Feeding and Swallowing: Treating the Child and Supporting the Family (Redle) 9:15 am - 12:30 pm</p>				<p>Session 25 Giggle Wiggle Clap and Learn - Move Your Body and Your Brain (Klison) 1:30 pm - 5:00 pm</p>				
		<p>Session 17 Teaching Functional Communication to Young Children With Autism or Other Language and Learning Challenges, Part 1 (Afterbaugh) 9:15 am - 12:30 pm</p>				<p>Session 29 Teaching Functional Communication to Young Children With Autism or Other Language and Learning Challenges, Part 2 (Afterbaugh) 1:30 pm - 5:00 pm</p>				
		<p>Session 14 Helping Adolescents: Processing Information: Understanding - Not Just Memorizing (Tattershall) 9:15 am - 12:30 pm</p>								<p>Poster Session 5:15 pm - 6:15 pm</p> <p>Silent Auction Bidding Ends at 6:00 pm</p>
		<p>Session 11 Middle-High School Speech Pathologists Round Table Discussion: Efficacy of Present System of Service Delivery (Scott) 9:15 am - 10:45 am</p>		<p>Session 21 Strategic Interventions for Auditory Memory Training (Kjesbo) 11:00 am - 12:30 pm</p>						
ADULT SLP		<p>Session 12 Post-Extubation Dysphagia: Considerations for Implementation of a Nursing Dysphagia Screen (Moynahan) 9:15 am - 10:45 am</p>								<p>Praxis World Series and Welcome Reception 5:00 pm - 6:30 pm Food and Cash Bar!</p>
		<p>Session 18 Visual Processing Dominates Learning: The Importance of Sensory Integration (Peters) 9:15 am - 12:30 pm</p>				<p>Session 27 Sensory Integration Techniques for Adult Literacy (Peters) 1:30 pm - 5:00 pm</p>				
						<p>Session 30 Voice Therapy Made Easy! (Radhakrishnan) 1:30 pm - 5:00 pm</p>				
PROFESSIONAL ISSUES				<p>Session 20 Career Networking - Resume Writing and Interviewing Skills (Clark) 11:00 am - 12:30 pm</p>		<p>Session 22 Career Networking (Clark) 1:30 pm - 3:00 pm</p>	<p>Session 32 The Road to Growing a Clinician: A Literary Connection (Payne) 3:30 pm - 5:00 pm</p>			
						<p>Session 24 Navigating Professional Associations and Regulatory Boards: The Basics of Licensure, Certification and Membership (Ellis, Olsen, Gregory) 1:30 pm - 3:00 pm</p>				
MULTI-INTEREST		<p>Session 13 Medicare in Audiology and Speech-Language Pathology, Including Bundled Payments (Kander) 9:15 am - 10:45 am</p>				<p>Session 28 Practical Counseling Strategies for Speech-Language Pathologists, Part 2 (Yaruss) 1:30 pm - 5:00 pm</p>				
		<p>Session 16 Practical Counseling Strategies for Speech-Language Pathologists, Part 1 (Yaruss) 9:15 am - 12:30 pm</p>								

CONVENTION AT-A-GLANCE – Friday

		8:00	9:00	10:00	11:00	12:00	1:00	2:00	3:00	4:00	5:00	
		PM										
Friday, February 17, 2012	AM 7:00											
AUDIOLOGY	Session 33 Annual KSHA Membership Forum 7:00 am- 8:00 am											
	Session 34 Auditory Processing Disorders in Children - Screening & Diagnosis (Weihsing) 8:00 am - 9:30 am	Session 48 Using Electrophysiology in Adult Hearing Aid Fittings - Current Progress (Weihsing) 10:00 am - 11:30 am	Session 50 Cochlear Implants ... When to Vote Yes, When to Vote No (Alworth) 1:45 pm - 3:15 pm	Session 58 Infant Hearing Screenings: What Most Mothers Don't Know (Alworth, Walker, Kubach) 3:30 pm - 4:30 pm								
PEDS SLP	Session 35 Fishing for New Ideas That Really Work Right Away (Kitson) 8:00 am - 9:30 am	Session 43 But I Don't Speak Their Language: Working With Linguistically Diverse Children, Part 1 (Anderson) 9:30 am - 11:30 am	Session 51 Early Intervention: Oral Placement Therapy for Children With Down Syndrome (Purdy) 1:45 pm - 3:15 pm									
	Session 40 Pediatric Feeding Disorders: PreChaining and Food Chaining Therapy Programs, Part 1 (Fraker, Walbert) 8:00 am - 11:30 am	Session 54 Pediatric Feeding Disorders: PreChaining and Food Chaining Therapy Programs, Part 2 (Fraker, Walbert) 1:45 pm - 5:00 pm										
ADULT SLP	Session 42 TBA (Tattershall) 8:00 am - 11:30 am	Session 44 Add a Slice of Music - Add a Slice of Fun! (Kitson) 10:00 am - 11:30 am	Session 57 Infant-Toddler Communication Development and Disorders (Geirshoff-Stowe) 2:00 pm - 4:15 pm									
	Session 36 Learning to Live With Aphasia (Simmons, Cranfill) 8:00 am - 9:30 am	Session 46 Spiders to Strawberries: Creating Communicative Environments for Young Children With Down Syndrome (Kleinans, Herf) 10:00 am - 11:30 am	Session 56 But I Don't Speak Their Language: Working With Linguistically Diverse Children, Part 2 (Anderson) 2:00 pm - 4:15 pm									
ADULT SLP	Session 37 Research and Rationale for the Use of Interactive Metronome in Speech-Language and Cognitive-Linguistic Treatment (Wing) 8:00 am - 9:30 am	Session 45 Enhancing Speech Therapy Outcomes With IM (Wring) 10:00 am - 11:30 am	Session 53 Multi-modality Approach to Rehabilitation of Patients With Traumatic Brain Injury (Hereford) 1:45 pm - 5:00 pm									
	Session 41 The Use of FEES as a Tool for Clinical Decision Making in the Evaluation and Management of Dysphagia (Gould) 8:00 am - 11:30 am	Session 47 Spirituality and Health: Do SLPs Play a Role? (Mahanna-Boden, Cranfill) 10:00 am - 11:30 am	Session 55 Voice Evaluation and Treatment (Gould) 1:45 pm - 5:00 pm									
PROFESSIONAL ISSUES	Session 39 Dementia Outside the Box, Part 1 (Shadowens) 8:00 am - 11:30 am	Session 49 What am I Missing?: Using Critical Thinking Skills to Recalibrate Clinical Decision Making (Mahanna-Boden, Ellis) 1:45 pm - 3:15 pm	Session 52 Dementia Outside the Box, Part 2 (Shadowens) 1:45 pm - 5:00 pm									
	Session 38 Stuttering Treatment Approaches for Children, Adolescents and Adults (Hughes) 8:00 am - 9:30 am	Session 47 Spirituality and Health: Do SLPs Play a Role? (Mahanna-Boden, Cranfill) 10:00 am - 11:30 am	Session 52 Dementia Outside the Box, Part 2 (Shadowens) 1:45 pm - 5:00 pm									
MULTI-INTEREST	Session 38 Stuttering Treatment Approaches for Children, Adolescents and Adults (Hughes) 8:00 am - 9:30 am	Session 47 Spirituality and Health: Do SLPs Play a Role? (Mahanna-Boden, Cranfill) 10:00 am - 11:30 am	Session 49 What am I Missing?: Using Critical Thinking Skills to Recalibrate Clinical Decision Making (Mahanna-Boden, Ellis) 1:45 pm - 3:15 pm									

Awards Luncheon and Annual Meeting
 11:30 am - 12:30 pm
Keynote Speaker
 12:30 - 1:30 pm

CONVENTION AT-A-GLANCE - SATURDAY

Saturday, February 18, 2012	AM 8:30	9:00	10:00	11:00	PM 12:00
PEDS SLP	<p>Session 59 <i>FoldAbility</i> (Relajo, Brock) 8:30 am - 10:00 am</p>	<p>Session 61 TBA 10:15 am - 11:45 am</p>			
ADULT SLP	<p>Session 60 <i>Management of the Fluent Aphasias: A Context-Based Approach</i> (Marshall) 8:30 am - 12:00 pm</p>				



Wednesday, February 15
Under Construction

Thursday, February 16*
7:00 am - 6:30 pm

Friday, February 17*
7:00 am - 3:30 pm

*Breakfast available each day at 7:00 am.
Grab some coffee and visit an exhibitor!

Exhibit Area Hours

PRAXIS WORLD SERIES AND WELCOME RECEPTION
Thursday, February 16
5:00 pm - 6:30 pm

Come join us in the Exhibit Hall for a light reception, poster sessions and silent auction!

Name Badges



Name badges must be worn to all sessions and food functions! Lost yours? You can obtain a new one at the registration desk.

Cell Phone Courtesy



KSHA requests that as a courtesy to speakers and colleagues, that all cell phones and pagers be turned off or on "vibrate" while in sessions.

KSHA Membership

For those of you who do not belong to KSHA, we invite you to become a member. Take advantage of the numerous benefits of membership, including discounted Convention rates. For your convenience, you can include your 2012 membership dues on your Convention Registration Form. You can also join and register for the Convention online at www.ksha.info.

Continuing Education for the KSHA Convention



The Kentucky Speech-Language-Hearing Association is approved by the Continuing Education Board of the American Speech-Language-Hearing Association (ASHA) to provide continuing education activities in speech-language pathology and audiology. See course information for number of ASHA CEUs, instructional level and content area. ASHA CE Provider approval does not imply endorsement of course content, specific products or clinical procedures.

This course is offered for up to 2.3 ASHA CEUs (various levels, professional area)

AAA Continuing Education



The Kentucky Speech-Language-Hearing Association is approved by the American Academy of Audiology to offer Academy CEUs for this activity. The program is worth a maximum of 1.7 CEUs. Academy approval of this continuing education activity does not imply endorsement of course content, specific products or clinical procedures.



International Institute for Hearing Studies

This program has been submitted for International Hearing Society CE credits.



**KENTUCKY
SPEECH-LANGUAGE-HEARING
ASSOCIATION**

838 East High Street
Suite 263
Lexington, KY 40502

Phone: 800-837-2446
Fax: 888-729-3489

Email: kshaoffice@ksha.info

Presorted
Standard
U.S. Postage
PAID
Pittsburgh, PA
Permit #2191



Hitting A Home Run For Communication Disorders

2012 REGISTRATION INFORMATION

OFFICERS LISTING

Ann Miller

President
foghorn78@fuse.net

Kellie Ellis

President Elect
kellie.ellis@eku.edu

Doug Keefe

Past President
douglas.keefe@jefferson.kyschools.us

Jeff Barefoot

Secretary
jeffrey.barefoot@wku.edu

Becky Goss

Treasurer
mark.goss@insightbb.com

Sybil Forsythe

Secretary Elect
sybil.forsythe@familychoicecare.com

Lisa L. Coleman

Past Secretary
lisaanddavid@bellsouth.net

Darwin Chapman

Treasurer Elect
dlc1@cardinalhill.org

Tamara Cranfill

Past Treasurer
tamara.cranfill@eku.edu

EXECUTIVE COUNCIL LISTING

Judy Page

Honors Committee
judith.page@uky.edu

Mick Miller

Archives
mick.miller@murraystate.edu

Teresa Bowerman

Membership Chair
tcbowerman@aol.com

Tamara Cranfill

Professional Development
tammy.cranfill@lincoln.kyschools.us

Donna Goodlett-Collins

Scholarship Committee
donna.goodlettcollins@brescia.edu

Jeff Holbrook

CEU
jbjh@tvscable.com

Judy Page

Newsletter Editor
judith.page@uky.edu

Pearl Payne

Diversity Committee
pearl.payne@murraystate.edu

Sherry Hoza

Public SEAL
shoza1@insightbb.com

Susan Waters

ASHA STAR
susanwaters@fuse.net

Linda Gregory

ASHA Advisory Councilor and SMAC
linda.gregory@familychoicecare.com

Mary Gray

PAC Chair
mary.gray@va.gov

Heather Marlow

PAC Treasurer
hmmyers@aol.com

Gail Murray

PAC Custodian
gmurray@arh.org

Rhonda Simmons-Miles

At-Large
milesx4@insightbb.com

Bev Stanley

At-Large

Patrick Jennings

Lobbyist
patrick@commonwealthalliances.com

Vacant

Audiology Chair
Honors Chair
Licensure Board Liaison

